

# Shipping Manual

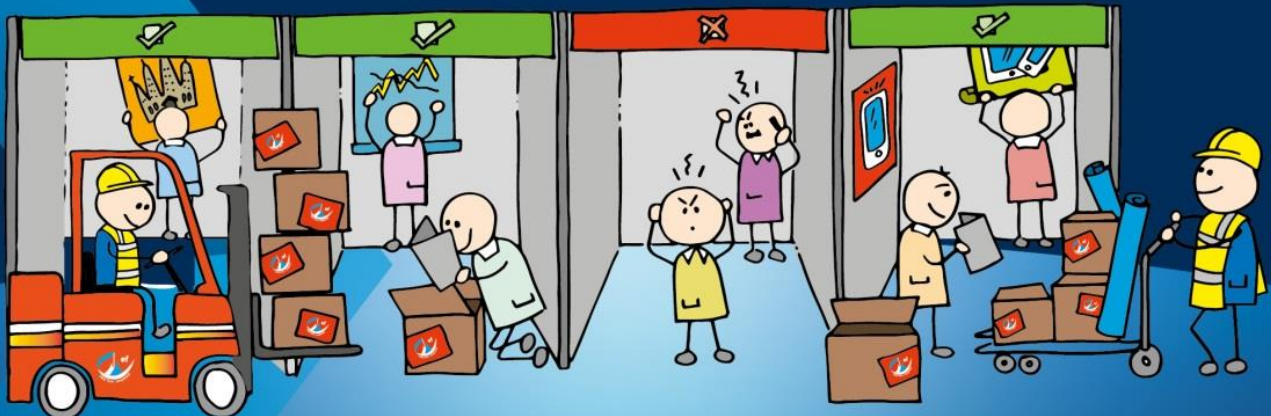


Future Travel Experience (FTE)  
Global 2022

06<sup>th</sup> - 09<sup>th</sup> September 2022

ARIA Resort & Casino

Las Vegas, USA



**Roger Bowman / Lyn Morna**

Tel: +44 (0)1732 885131

Fax: +44 (0) 1732 886689

Email: [roger@ef-gsm.com](mailto:roger@ef-gsm.com) / [lyn@ef-gsm.com](mailto:lyn@ef-gsm.com)

[www.ef-gsm.com](http://www.ef-gsm.com)

Defined by our difference



ESSA | Event Supplier and Services Association





## FUTURE TRAVEL EXPERIENCE (FTE) GLOBAL 2022

06<sup>th</sup> – 09<sup>th</sup> September 2022

ARIA Resort & Casino, Las Vegas

### INTERNATIONAL SHIPPING INSTRUCTIONS

**Exhibition Freighting G.S.M. Limited** are the Sole official Freight Forwarder and Customs broker for the **Future Travel Experience Global 2022**.

Due to strict customs formalities, Exhibition Freighting G.S.M. Limited, working in conjunction with local partner GES Logistics, are pleased to share their International freight and local customs formalities experience to ensure your exhibits reach your stand for the right date and time.

**Exhibition:** Future Travel Experience Global 2022

**Venue:** ARIA Resort & Casino / Las Vegas

**Hall:** Bristlecone Ballroom

**Organiser:** FTE

**Build-up 06<sup>th</sup> September 2022:**

- 10:00hrs – 19:00hrs - Space Only Exhibitor / Contractor Access
- 16:00hrs – 19:00hrs - Shell Scheme Access (GES shell scheme build during morning. No access to set up prior to 16:00hrs)

**Build-up 07<sup>th</sup> September 2022:**

- 08:00hrs – 10:00hrs - Shell Scheme and Space Only Exhibitor Access (Finishing touches only, no building)

**Break-down 08<sup>th</sup> September 2022:**

18:30hrs – 21:00hrs

### INTERNATIONAL FREIGHT CONTACT DETAILS

**Exhibition Freighting G.S.M. Limited**

**Attn: Roger Bowman / Lyn Morna**

Global House  
Unit 5 Station Court, Station Approach  
Borough Green, Kent TN15 8AD  
United Kingdom

Tel: +44 (0) 1732 885131

Email: [roger@ef-gsm.com](mailto:roger@ef-gsm.com) /  
[lyn@ef-gsm.com](mailto:lyn@ef-gsm.com)

Web: [www.ef-gsm.com](http://www.ef-gsm.com)

### APPOINTED USA MATERIAL HANDLING CONTRACTOR / DRAYAGE / ON-SITE HANDLING

Ordering: <https://ordering.ges.com>

Main 800.475.2098 | Fax 702.901.8881

7000 Lindell Road  
Las Vegas, NV 89118  
[ges.com](http://ges.com)



ESSA | Event Supplier and Services Association



Tel: +44 (0)1732 885131

[www.ef-gsm.com](http://www.ef-gsm.com)



## INTERNATIONAL SHIPPING GUIDELINES

### FREIGHT ARRIVAL DEADLINES

Airport / Port of Arrival	For Delivery to Advanced Warehouse	For delivery direct to Venue / Show Site Dock
Air: LAS Airport	22 <sup>nd</sup> AUGUST 2022	Direct Deliveries not allowed
Ocean: Long Beach/ Los Angeles	17 <sup>th</sup> AUGUST 2022	Direct Deliveries not allowed

### CONSIGNEE INSTRUCTIONS:

Consignee on Direct MAWB or Express MBL - Under CCIPL Only / Not for ATA Carnet

\*\* Exhibitor Name / Booth Number \*\*  
C/O Sobel Network Shipping Co .. Inc  
100 North Centre Avenue  
Suite# 302  
Rockville Centre , NY 11570

**Notify:** Threeway / GES  
Tel: +1 909 539 9976  
Fax: +1 909 503 0567  
Email: [3waygesintl@threeway.com](mailto:3waygesintl@threeway.com)

**If shipping under ATA Carnet, please contact Roger Bowman, [roger@ef-gsm.com](mailto:roger@ef-gsm.com)**

**\*\* All freight must be sent on prepaid basis, 25% outlay fee will be levied for any Freight collect shipments \*\***

**No direct deliveries sent to the venue will be accepted, this includes direct drop offs by space only stand contractors. All space only contractors must have prior arrangements with GES for offloading into the venue from the loading bay (this is a US specific Rule)**

Please note that EF GSM will be working in conjunction with GES

EF GSM will be responsible for international shipping and  
GES domestic shipping within the US and Canada

All Items should be labelled clearly with:  
Show Name, Stand Number, Company Name



ESSA | Event Supplier and Services Association



Tel: +44 (0)1732 885131  
[www.ef-gsm.com](http://www.ef-gsm.com)



## DOCUMENTS:

Please send us copies of all shipping documents for approval in advance and prior to shipping (see contact details on 1st page). Failure to do so will mean that Exhibition Freighting G.S.M. Limited cannot be held responsible for customs fines, additional charges, or non-clearance of goods.

Once documents are approved: Full pre alert to include POA, AWB or Ocean Bill of Lading ( BL ) and Combined Commercial Invoice & Packing List ( CCIPL ) Including Flight or Vessel information to be sent as follows:

**Air freight:** Approved Documents required 48 hours prior to freight arrival

**Ocean-freight:** Approved Documents required at Least 5 Working Days prior to freight arrival

**CCIPL:** Must include detailed description of goods in English language only, country of manufacture, HTS Codes and values per Unit & Total value – Please **contact Roger Bowman, [roger@ef-gsm.com](mailto:roger@ef-gsm.com) for assistance**

**Customs Power of Attorney (POA):** Must be completed and signed by President, CEO, CFO, Owner or Director

**10+2 ISF Form:** Must be completed for all Ocean shipments – ISF must be sent minimum 72 hours prior to vessel departure.

**ATA Carnet:** If you are choosing to export under ATA Carnet, please contact Roger Bowman, [roger@ef-gsm.com](mailto:roger@ef-gsm.com)

All work carried out is subject to the terms and conditions of the British International Freight Association 2021 edition. Copy available upon request or [www.ef-gsm.com](http://www.ef-gsm.com)



ESSA | Event Supplier and Services Association



Tel: +44 (0)1732 885131  
[www.ef-gsm.com](http://www.ef-gsm.com)



Tel: +44 (0)1732 885131

**Fax:** +44 (0) 1732 886689

**Email:** [info@ef-gsm.com](mailto:info@ef-gsm.com)

**[www.ef-gsm.com](http://www.ef-gsm.com)**

Global House • 5 Station Court • Station Approach  
Borough Green • Kent • TN15 8AD • United Kingdom



ESSA | Event Supplier and  
Services Association

