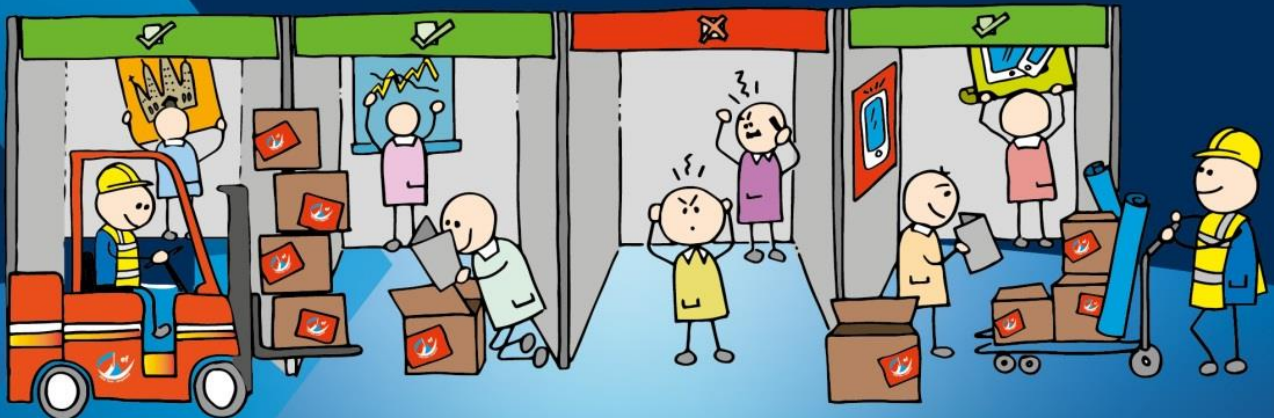


Shipping Manual



29TH AIRPORT COMMERCIAL & RETAIL

CONFERENCE & EXHIBITION



Kevin Watkins

Tel: +44 (0)1732 885131

Fax: +44 (0) 1732 886689

Email: kevin@ef-gsm.com

www.ef-gsm.com

Defined by our difference



ESSA | Event Supplier and
Services Association





ACI EUROPE 29th AIRPORT COMMERCIAL & RETAIL 2020
CUBEX CENTRE PRAGUE , CZECH REPUBLIC
21ST – 23RD APRIL 2020

WORLDWIDE SHIPPING INSTRUCTIONS

Exhibition Freighting G.S.M. Limited , appointed as Sole official Freight Forwarder, On site handling and Customs broker for the **ACI Commercial & Retail 2020**

Due to strict customs formalities , Exhibition Freighting G.S.M. Ltd are pleased to share their International freight and Local Customs experience to ensure your exhibits reach your stand for the right date and time.

Exhibition:	ACI Europe 29th Airport Commercial & Retail
Venue:	Cubex Centre, Prague
Organiser:	PPS Publication
Build up:	21st April 2020
Running time:	22nd – 23rd April 2020
Dismantling:	23rd April 2020

FREIGHT ENQUIRY CONTACT DETAILS

Exhibition Freighting G.S.M. Limited

Global House
Unit 5 Station Court, Station Approach
Borough Green, Kent TN15 8AD
United Kingdom

Attn: Kevin Watkins

Tel: +44 (0) 1732 885131
Email: kevin@ef-gsm.com
Web: www.ef-gsm.com



ESSA | Event Supplier and Services Association



Tel: +44 (0)1732 885131
www.ef-gsm.com

FREIGHT ARRIVAL DEADLINES

**** Please note PUBLIC HOLIDAYS 10TH , 12TH & 13TH April ****

<p>ADVANCED WAREHOUSE 140 00 Prague NCTS: CZ 510202</p>	<p>FREE CIRCULATION ROADFREIGHT receiving between 7th > 16th April 2020</p> <p>T1 GOODS Must arrive at least 5 working days before stand delivery</p>
<p>AIRFREIGHT Vaclav Havel Airport / PRG</p>	<p>AIRFREIGHT Arrival deadline Tuesday 14th April 2020</p>

CONSIGNEE INSTRUCTIONS / WAREHOUSE DELIVERY ADDRESS;

Consignee;

SCHENKER spol. s.r.o
Kongresove centrum Praha
5. Kvetna 65
140 00 Praha 4, Czech Republic
Tel: +420 242 405 160
NCTS: CZ 510202

Notify;

ACI EUROPE 29th AIRPORT COMMERCIAL & RETAIL
Name of exhibitor
Hall # Stand #

**** All freight must be sent on Prepaid basis, 25% outlay fee will be levied for any Freight collect shipments ****

DOCUMENTS;

Please send us copies of all shipping documents for approval in advance and prior to shipping, Failure to do so will mean that Exhibition Freight G.S.M. Limited cannot be held responsible for customs fines, additional charges, or non-clearance of goods. Any fee's / fines levied will be for the shippers account and must be paid before final delivery to stand.

Once documents are approved: Please forward your Full pre alert, including Order Form , AWB, Courier Waybill, Combined Commercial Invoice & Packing List (CCIPL) Flight information, stand delivery date and contact on stand.

CCIPL: must include detailed description of goods in English language only, country of manufacture, HTS Codes and values per Unit & Total value.

For enquires / pre alerts: **kevin@ef-gsm.com +44 1732 885131**

All work carried out is subject to the terms and conditions of the British International Freight Association 2017 edition.
Copy available upon request



Tel: +44 (0)1732 885131

Fax: +44 (0) 1732 886689

Email: info@ef-gsm.com

www.ef-gsm.com

Global House • 5 Station Court • Station Approach
Borough Green • Kent • TN15 8AD • United Kingdom



ESSA | Event Supplier and
Services Association

