

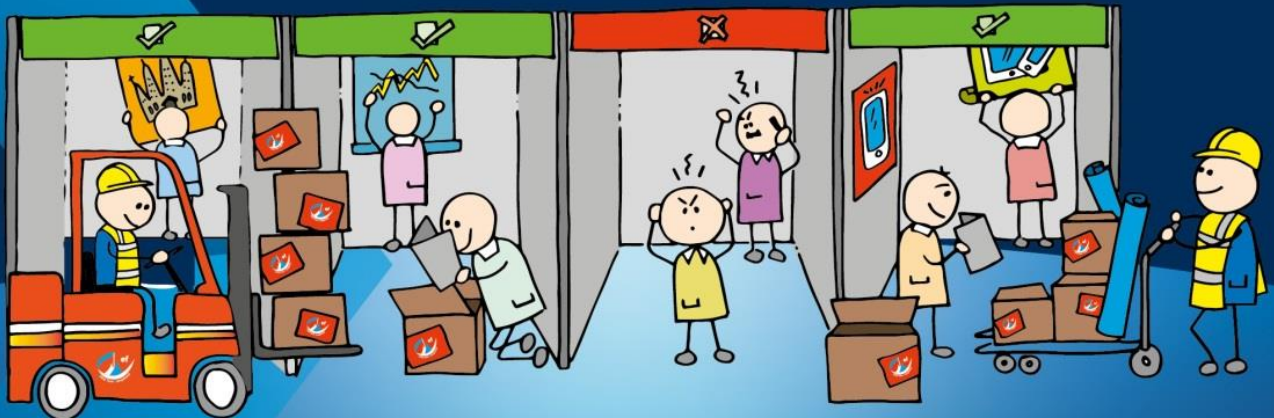
Shipping Manual



**FUTURE
TRAVEL
EXPERIENCE**

GLOBAL

**ARIA RESORT AND CASINO
LAS VEGAS
4-6 SEPTEMBER 2019**



Kevin Watkins

Tel: +44 (0)1732 885131

Fax: +44 (0) 1732 886689

Email: kevin@ef-gsm.com

www.ef-gsm.com

Defined by our difference



ESSA | Event Supplier and
Services Association



BRITISH INTERNATIONAL
FREIGHT ASSOCIATION



FUTURE TRAVEL EXPERIENCE GLOBAL @ Aria Resort, Las Vegas
4th – 6th Sept 2019

WORLDWIDE SHIPPING INSTRUCTIONS

Exhibition Freighting G.S.M. Limited are the Sole official Freight Forwarder and Customs broker for the **Future Travel Experience Global 2019**.

Due to strict customs formalities, Exhibition Freighting G.S.M. Limited, working in conjunction with local partner GES Logistics, are pleased to share their International freight and Local Customs experience to ensure your exhibits reach your stand for the right date and time.

Exhibition:	Future Travel Experience Global 2019
Venue:	Aria Resort / Las Vegas
Organiser:	PPS Publication
Build up:	3rd September 2019
Running time:	4th – 6th September 2019
Dismantling:	6th September 2019

INTERNATIONAL FREIGHT CONTACT DETAILS

Exhibition Freighting G.S.M. Limited

Attn: Kevin Watkins

Global House
Unit 5 Station Court, Station Approach
Borough Green, Kent TN15 8AD
United Kingdom

Tel: +44 (0) 1732 885131
Email: kevin@ef-gsm.com
Web: www.ef-gsm.com/

APPOINTED USA MATERIAL HANDLING CONTRACTOR / ON SITE HANDLING

Ordering: <https://ordering.ges.com>
Main 800.475.2098 | Fax 702.901.8881



7000 Lindell Road
Las Vegas, NV 89118
ges.com



ESSA | Event Supplier and Services Association



Tel: +44 (0)1732 885131
www.ef-gsm.com

International Shipping Guidelines

FREIGHT ARRIVAL DEADLINES

Airport / Port of Arrival	For Delivery to Advanced Warehouse	For delivery direct to Venue / Show Site Dock
Air: LAS Airport	22nd August 2019	27 TH August 2019
Ocean: Long Beach/ Los Angeles	16 th August 2019	20 th August 2019

CONSIGNEE INSTRUCTIONS;

Consignee on Direct MAWB OR Express MBL (Under CCIPL Only / Not for ATA Carnet)

** Exhibitor Name / Booth Number **
 C/O Sobel Network Shipping Co .. Inc
 100 North Centre Avenue
 Suite# 302
 Rockville Centre , NY 11570

Notify: Threeway / GES
 Tel: +1 909 539 9976
 Fax: +1 909 503 0567
 Email: 3waygesintl@threeway.com

**** All freight must be sent on Prepaid basis, 25% outlay fee will be levied for any Freight collect shipments ****

DOCUMENTS;

Please send us copies of all shipping documents for approval in advance and prior to shipping (see contact details on 1st page). Failure to do so will mean that Exhibition Freighting G.S.M. Limited cannot be held responsible for customs fines, additional charges, or non-clearance of goods.

Once documents are approved: Full pre alert to include POA, AWB or Ocean Bill of Lading (BL) and Combined Commercial Invoice & Packing List (CCIPL) Including Flight or Vessel information to be sent as follows;

Airfreight : Approved Documents required 48 hours prior to freight arrival

Ocean-freight: Approved Documents required at Least 5 Working Days prior to freight arrival

CCIPL: must include detailed description of goods in English language only, country of manufacture, HTS Codes and values per Unit & Total value.

Customs Power of Attorney (POA) completed and signed by President, CEO, CFO, Owner or Director

10+2 ISF Form: Must be completed for all Ocean shipments – ISF must be sent minimum 72 HOURS prior to vessel departure.

ATA Carnet: If you are choosing to export under ATA Carnet, please make contact for specific consignee guidelines

All work carried out is subject to the terms and conditions of the British International Freight Association 2017 edition. Copy available upon request or www.ef-gsm.com/benefits



Tel: +44 (0)1732 885131

Fax: +44 (0) 1732 886689

Email: info@ef-gsm.com

www.ef-gsm.com

Global House • 5 Station Court • Station Approach
Borough Green • Kent • TN15 8AD • United Kingdom



ESSA | Event Supplier and
Services Association

